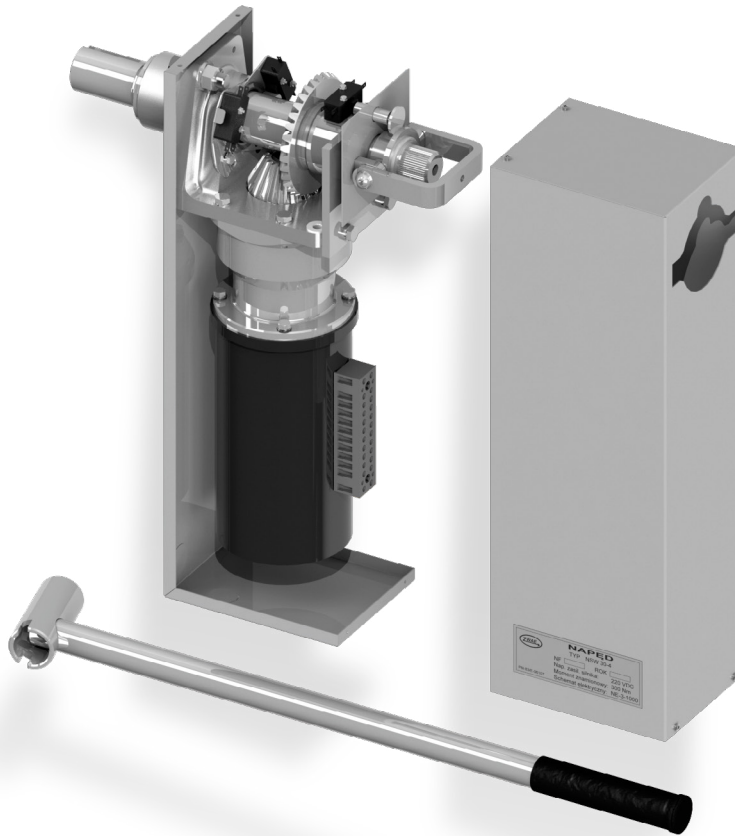


NSW30

Motor operating mechanism



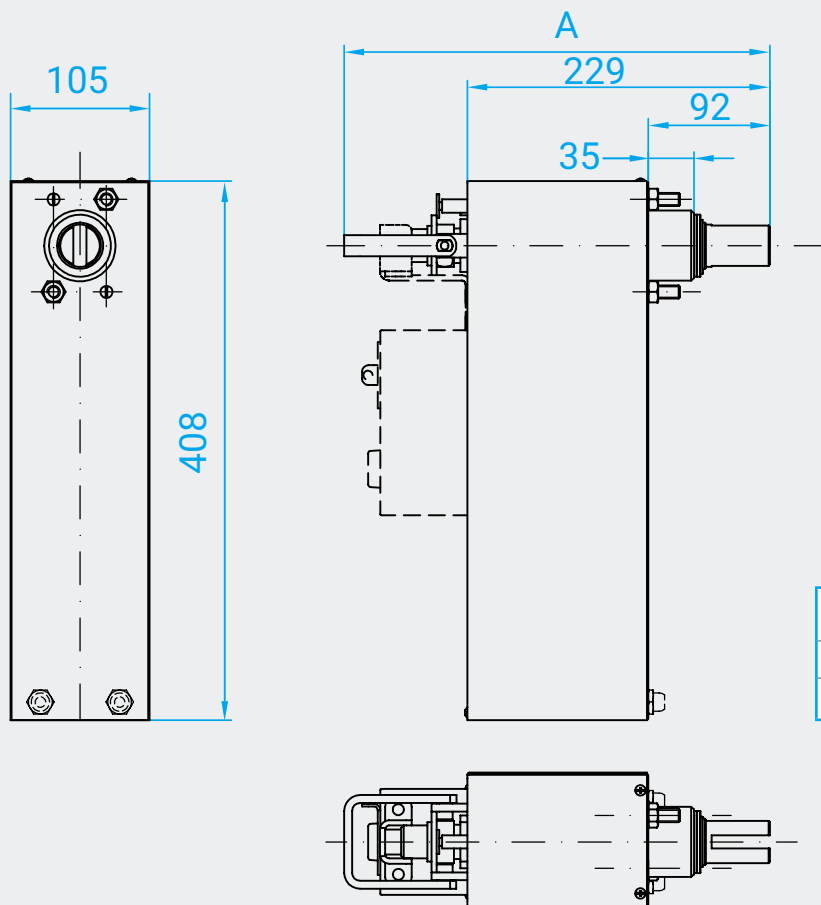
CHARACTERISTICS

- Simple assembling of the mechanism
- Possibility to application with many kinds of apparatus
- High torque allowing to application in hard conditions
- Simple regulation of the angle up to 210° with limit switches assembled directly in the mechanism
- Limit switches assembled directly on the apparatus
- Compatibility as a replacement for manual operating mechanism NR-1
- Many voltage versions available: 24, 110, 220 VDC/AC
- Possibility to equip with electromagnetic interlock
- Many options of engaging with apparatus, e.x. with aple gear
- Possibility to adapt control system of the mechanism for clients' requirements

SPECIFICATION

Item	Parameter	Value	
		NSW30-3	NSW30-4
1.	Operating mechanism type	NSW30-3	NSW30-4
2.	Applied motor type	with permanent magnets	series
3.	Motor rated voltage	220 [VDC/AC] 110 [VDC] 24 [VDC/AC]	220 [VDC/AC]
4.	Rated power	300 [W]	300 [W]
5.	Motor rated current	2 [A] / 220 [V] 4 [A] / 110 [V] 19 [A] / 24 [V]	2,2 [A] / 220 [V]
6.	Shaft torque: - rated - maximal	150 [Nm] 300 [Nm]	150 [Nm] 300 [Nm]
7.	Switching time	ca. 5s	ca. 5s
8.	Maximum conductor cross section	4 [mm ²]	4 [mm ²]
9.	Rated mechanical strength	2000 cycles	2000 cycles

DIAGRAMS



NSW30 type	A
without interlock	296
with interlock	306

NSW30 | MV Indoor switchgear operating mechanisms

DIAGRAMS

Coupling methods of the operating mechanism NSW30 type with MV indoor switchgear

